



# Conservation News

## Coles County Soil and Water Conservation District

6021 Development Drive, Suite 2, Charleston, IL 61920

Phone: (217) 345-3901 ext. 3

Email: [info@colescountyswcd.org](mailto:info@colescountyswcd.org)

<http://www.colescountyswcd.org>

[facebook.com/ColesCountySWCD](https://www.facebook.com/ColesCountySWCD)

Volume 62 Issue 3

### Free Pond Management Seminar

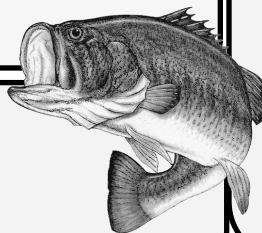
**WHEN:** Wednesday, August 31st, 6pm

**WHERE:** Wilderness Pond, Fox Ridge State Park

**SPEAKER:** Jim Garavaglia, IDNR Fisheries Biologist

**Bring your questions and a lawnchair!**

To RSVP for this **FREE** event call the  
Coles County SWCD (217) 345-3901 ext 3 or  
email [info@colescountyswcd.org](mailto:info@colescountyswcd.org).



**Topics will include:**

- Fish Management
- Aquatic Plant Control
- Fish Species Identification
- Stocking Recommendations
- Pond Construction
- Pond Maintenance

A map to the location can be found at <https://goo.gl/maps/ptbteo42BEYELG4g8>

### Education Update

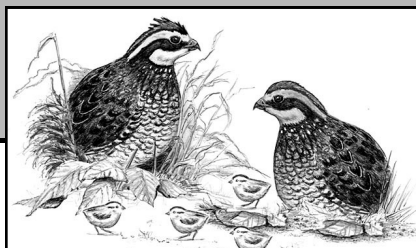
Illinois Ag in the Classroom is coming to a classroom near you!! Every year our Education Coordinator goes into Coles County classrooms leading numerous lessons and activities to show the value of the agricultural industry and where our food comes from. We have many lessons demonstrating life cycles of plants and animals, water cycle, uses of many different ag products and commodities such as corn, soybeans, and dairy. Your classroom can even adopt a farmer and follow their daily life on the farm through the seasons. Lessons are aligned with the State Learning Standards and presentations can last 20-60 minutes. Most lessons are geared toward 1st-4th graders, but we also have STEM activities for 5th through 8th grade. If you are a classroom, homeschool, or co-op teacher contact us to discuss how we can help you reach your educational goals. We can also do presentations for community groups such as libraries, 4-H groups, scout groups, and recreation departments.



### Upcoming Events:

#### July:

- 4th—Independence Day (Office Closed)
- 12th—Board Meeting



#### August:

- 9th—Board Meeting
- 31st—Pond Seminar

#### September:

- 5th—Labor Day (Office Closed)
- 13th—Board Meeting
- 23rd—Fall Fish Orders Due

**Delay mowing of roadsides and waterways from May 15th-Aug. 1st for ground-nesting birds... Don't Mow, Let Them Grow!**

# Popular Illinois Land Conservation Program Reopens

SPRINGFIELD – Farmers, ranchers and agricultural landowners with property prone to flooding and nutrient runoff will have the opportunity to enroll in Illinois’ reopened land conservation program, now available in 68 counties.

The Illinois Conservation Reserve Enhancement Program (CREP) – administered by the Illinois Department of Natural Resources (IDNR) in partnership with the U.S. Department of Agriculture, Farm Service Agency (FSA) – is one of the oldest and most popular in the nation and an important tool in addressing climate change and natural resources conservation challenges.

“Programs like CREP provide critical support to private landowners who want to implement sound conservation practices on their property,” said IDNR Director Colleen Callahan. “These efforts help reduce runoff, protect our precious soil and improve wildlife habitat.”

Illinois CREP will reopen for enrollments June 15 for the first time since 2015. State funding for the program is provided through Gov. JB Pritzker’s Rebuild Illinois capital program.

Through Illinois CREP, federal and state resources are made available to program participants to voluntarily enroll in 14-to-15-year federal CREP contracts and a subsequent 15-year or permanent conservation easement with the State of Illinois. It expands the voluntary, incentive-based Conservation Reserve Program available through FSA to Illinois agricultural producers and landowners within the Illinois and Kaskaskia River watersheds.

“CREP is one of our most flexible tools when it comes to voluntary, locally led, partner-drive conservation efforts, and we’re so glad we’re able to put it to work again in Illinois,” said Scott Halpin, USDA Farm Service Agency State Director in Illinois. “This initiative previously had a positive impact in Illinois, and we look forward to broadening the reach of the program to new agricultural producers and landscapes. We are so grateful to have support from Illinois leaders to make this program possible.”

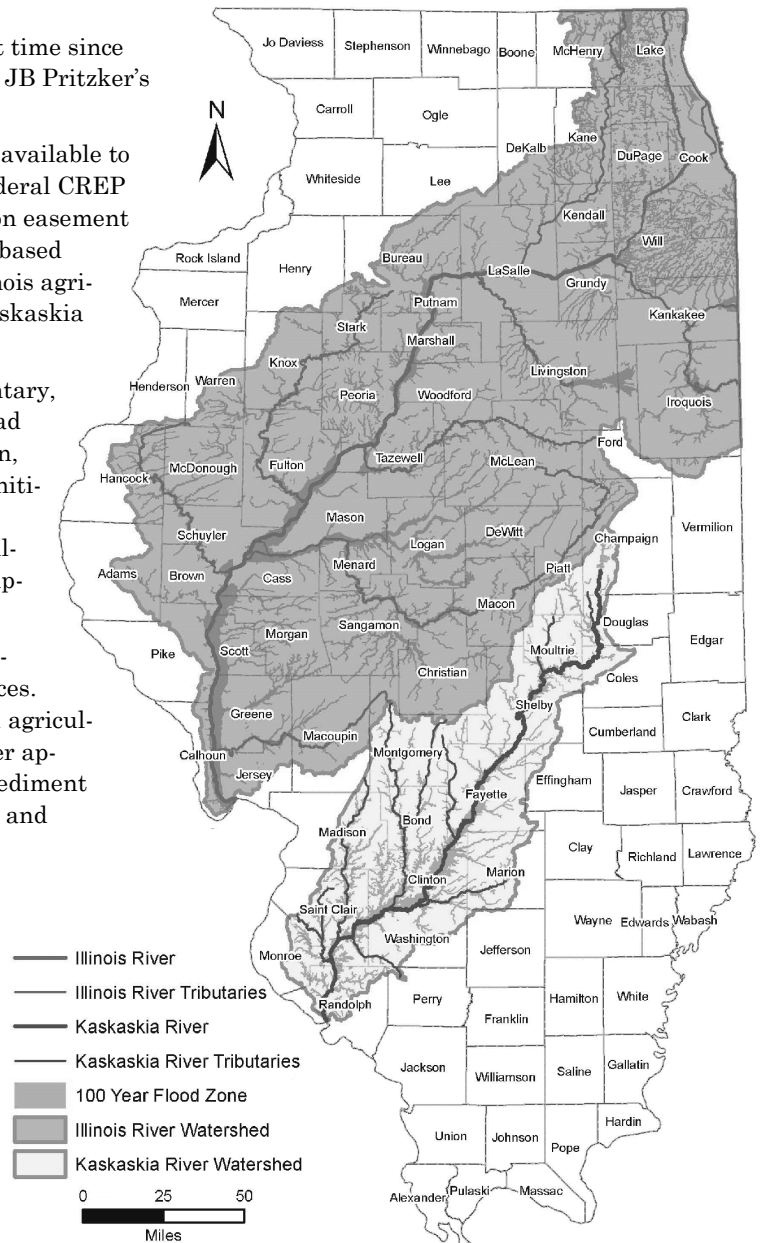
Illinois CREP assists farmers, ranchers and agricultural landowners to improve water quality and conserve natural resources. Participants remove cropland and marginal pastureland from agricultural production and convert the land to grasses, trees or other approved vegetation. This improves water quality by reducing sediment and nutrients entering streams and rivers, and enhances fish and wildlife habitat in the project area.

In return, FSA provides participants with rental payments, a 50% cost-share payment for installing approved conservation practices, and incentive payments for certain practices. The State of Illinois provides a cost-share match in addition to a one-time payment for all land entered into an easement.

CREP conservation practices include of permanent native grasses, hardwood tree plantings, permanent wildlife habitats, shallow water areas for wildlife, filter strips, riparian buffers, wetland restorations, non-floodplain wetland restorations, and rare and declining habitat for prairie and oak savanna ecosystems.

The Illinois CREP includes all or portions of the following 68 counties in the Illinois and Kaskaskia river watersheds: Adams, Bond, Brown, Bureau, Calhoun, Cass, Champaign, Christian, Clinton, Coles, Cook, DeKalb, DeWitt, Douglas, DuPage, Effingham, Fayette, Ford, Fulton, Greene, Grundy, Hancock, Henderson, Henry, Iroquois, Jefferson, Jersey, Kane, Kankakee, Kendall, Knox, Lake, LaSalle, Lee, Livingston, Logan, McDonough, McHenry, McLean, Macon, Macoupin, Madison, Marion, Marshall, Mason, Menard, Monroe, Montgomery, Morgan, Moultrie, Peoria, Perry, Piatt, Pike, Putnam, Randolph, St. Clair, Sangamon, Schuyler, Scott, Shelby, Tazewell, Vermilion, Warren, Will and Woodford counties.

Interested farmers, ranchers and agricultural landowners are encouraged to contact the Illinois Department of Natural Resources, Farm Service Agency, or their local soil and water conservation district for more information about enrolling in Illinois CREP.



# Coles County SWCD Fall 2022 Fish Sale

Name: \_\_\_\_\_  
 Address: \_\_\_\_\_  
 City: \_\_\_\_\_  
 Phone Number: \_\_\_\_\_  
 Email: \_\_\_\_\_

Return order form with payment to:  
 Coles County SWCD  
 6021 Development Drive, Suite 2  
 Charleston, IL 61920

**Important Dates:**  
 Fish Orders Due: Friday, September 23rd by 4:30pm  
 Fish Pick Up: Wednesday, October 5th at 10:00am at Coles Co SWCD Office

| Fish Species  | Size  | Price        | Quantity | Subtotal |
|---|-------|--------------|----------|----------|
| Channel Catfish   | 4-6"  | \$1 each     |          | \$       |
|   | 6-8"  | \$1.25 each  |          | \$       |
| Largemouth Bass   | 3-4"  | \$1.75 each  |          | \$       |
| Bluegill  | 1-3"  | \$1 each     |          | \$       |
|   | 3-5"  | \$1.50 each  |          | \$       |
| Hybrid Sunfish  | 2-3"  | \$1.25 each  |          | \$       |
| Red Ear Sunfish   | 3-4"  | \$1.50 each  |          | \$       |
| Fathead Minnows   | 1-3"  | \$12 per lb  |          | \$       |
|   |       |              |          |          |
| Triploid Grass Carp   | 8-11" | \$12.50 each |          | \$       |
| <i>Table below must be completed for grass carp orders. Please call if you don't know your township, range, or section.</i> |       |              |          |          |
|   |       |              | Total    | \$       |

## **TABLE MUST BE COMPLETED FOR ALL GRASS CARP ORDERS:**

| County           | Township    | Range      | Section   | Pond Size (Surface Acres) | Water Name  | # of Fish |
|------------------|-------------|------------|-----------|---------------------------|-------------|-----------|
| <i>Ex: Coles</i> | <i>T11N</i> | <i>R9E</i> | <i>16</i> | <i>12 ac.</i>             | <i>Pond</i> | <i>4</i>  |

**For Office Use: Date Paid:** \_\_\_\_\_ **Amount:** \_\_\_\_\_ **Check#/Cash:** \_\_\_\_\_

### **Charleston Field Office Staff and Directors**

| <b><u>Coles Co. SWCD Board of Directors</u></b>  | <b><u>Coles Co. SWCD Employees</u></b>  | <b><u>NRCS Employees</u></b>  |
|--|---|---|
| <b>Bill Janes:</b> Chairman<br><b>Justin Thomas:</b> Vice Chairman<br><b>Todd Easton:</b> Secretary/Treasurer<br><b>Pat Harrington</b><br><b>William Tapella</b> | <b>Terina Coffey</b><br>Administrative & Education Coordinator<br><br><b>Lauren Spaniol</b><br>Resource Conservationist | <b>Andy Brantner:</b> District Conservationist<br><b>Stephen Head:</b> Soil Conservationist<br><b>Bridget Ragan:</b> Soil Conservation Tech.<br><b>Kent Macy:</b> Technical Biology Specialist<br><b>Matt Dasenbrock:</b> Area Engineer<br><b>Kerry Bushue:</b> Civil Engineering Tech. |

As a cooperator of NRCS, SWCD must provide reasonable accommodations to USDA customers with disabilities, where appropriate. Individuals requiring reasonable accommodation for any NRCS or SWCD programs or services should contact Carzella Pritchett, Illinois NRCS' Disability Emphasis Program Manager, at (217) 353-6651 directly. Determinations on requests for reasonable accommodation will be made on a case-by-case basis. USDA-NRCS/SWCD are an equal opportunity employer and provider.

Conservation News  
 Coles County Soil & Water Conservation District  
 6021 Development Drive, Suite 2  
 Charleston, IL 61920  
 www.colescountyswcd.org

NONPROFIT ORG.  
 U.S. POSTAGE PAID  
 PERMIT NO. 32  
 CHARLESTON, IL 61920

Mailing  
 Address  
 Goes  
 Here



**TOMCO**  
 insurance agency

Auto Home Farm Business

217-345-6750  
 TomcoAgency.com

**Corrie Appraisal & Consulting, Inc.**

*Providing Services for Agricultural,  
 Commercial, Residential & Multi-Family*

**G. Daniel Corrie**  
 Certified General Real Estate Appraiser  
 1403 Sixth Street • Charleston • 348-6011  
 corrieappraisal.com

**CHRIS OVERTON  
 EXCAVATING**

Waterways, Terraces, Fence Rows  
 Free Estimates  
 217/235-4738

Interested in sponsoring the Conservation News? Our circulation is over 1500 readers per quarter!

To become a sponsor, please contact our office at (217) 345-3901 ext. 3.



**Farm Credit Illinois**  
**Julie Crippin**  
 Vice President, Ag Financial Services  
 321 N. Central t: 217-465-7605  
 Paris, IL 61944 f: 217-463-3704  
 c: 217-799-4150

Julie.crippin@farmcreditIL.com  
 scott.montgomery@fcsillinois.com




Oakland, IL  
 (217) 346-2312  
 www.birkeys.com

**BATTERY SPECIALISTS**  
 Batteries—Starters—Alternators  
 No Batteries Too Big or Small

1519 Madison - Charleston, 217.345.8658  
 309 N 15th - Mattoon, 217.258.8658

**Alliance Tractor**



Highway 45 South  
 Mattoon, IL 61938  
 217-234-6478